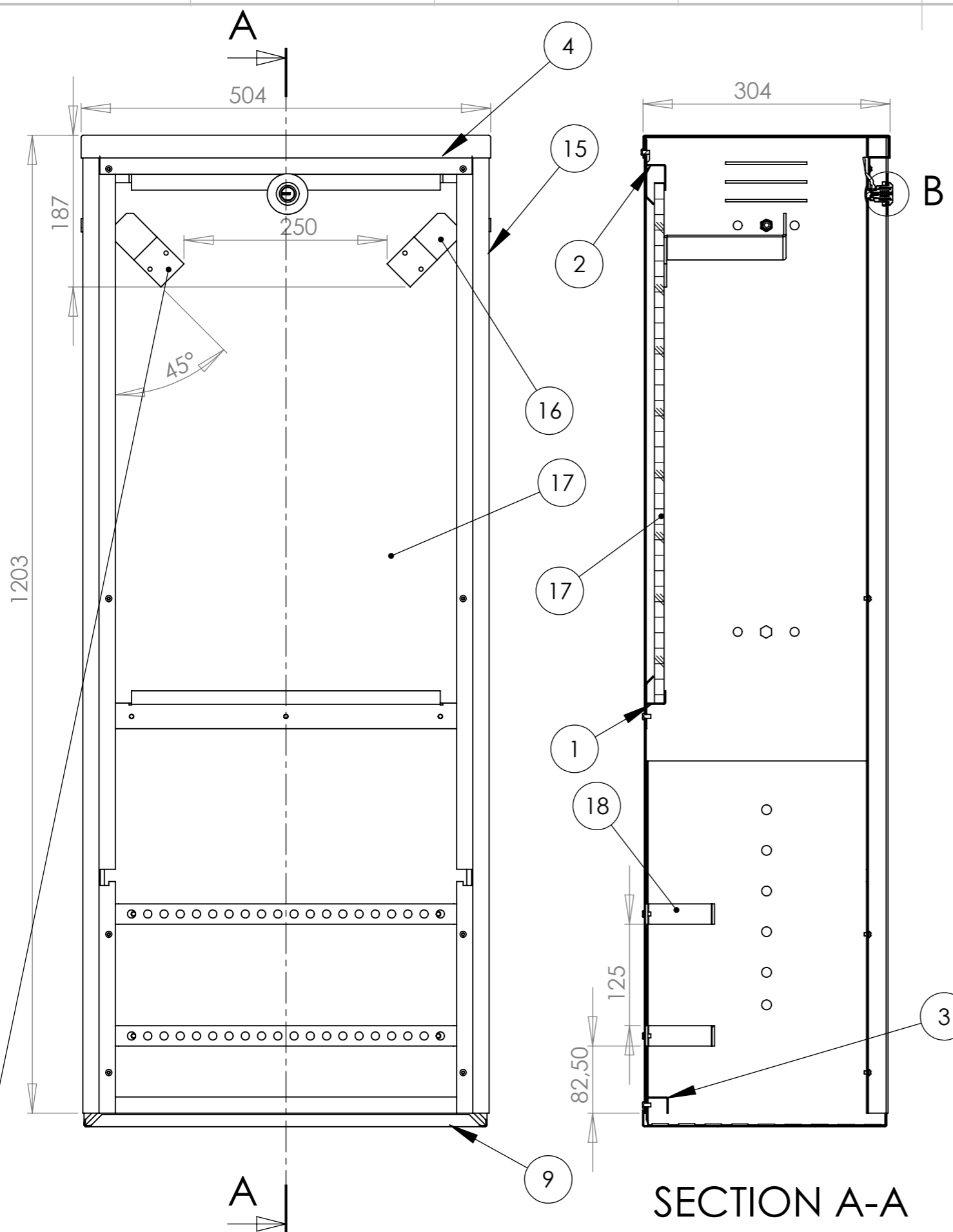


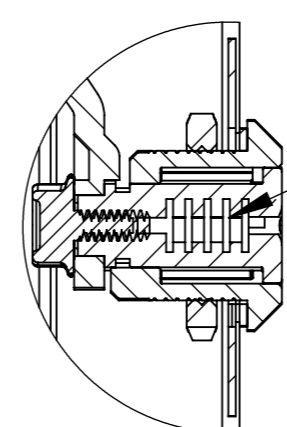
This drawing is the property of Stansefabrikken Fredrikstad AS. Fredrikstad Norway and must not be transferred, lent or reproduced without an explicit written permission from the company



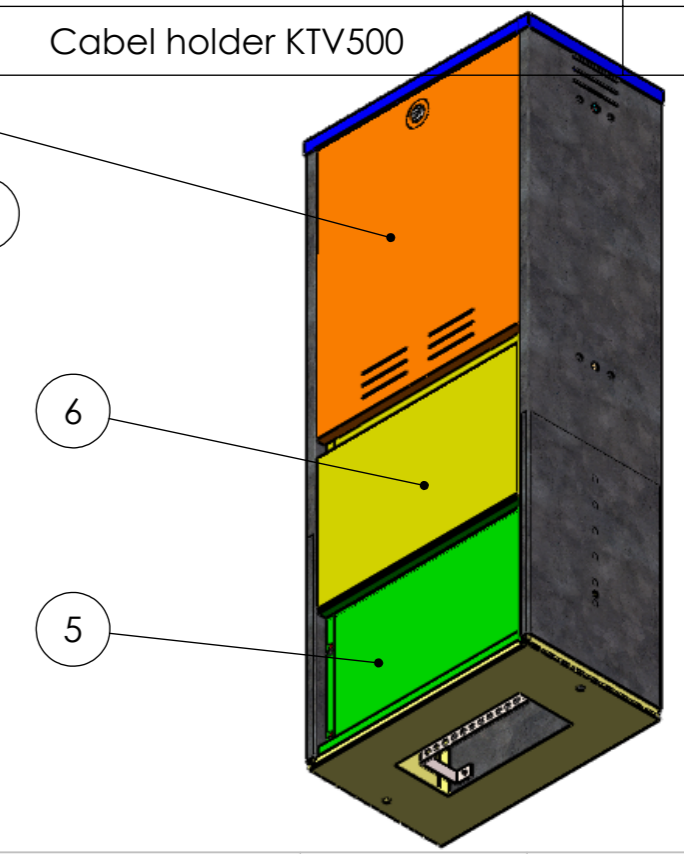
SECTION A-A

Cabel handel must be tightened with bolts M5

ITEM NO.	PART NUMBER	DESCRIPTION	QTY.
1	SFF317770P1	LOWER HOLDER, KTV-500	1
2	SFF318202P1	UPPER HOLDER, KTV-500	1
3	SFF450381P1	BRACKET, KTV-500	1
4	SFF350913P1	ROOF, KTV-500	1
5	SFF350993P1	LOWER COVER, KTV-500	1
6	SFF350992P2	MIDDLE COVER, KTV-500	1
7	SFF350995P2	DOOR TRIOVING, KTV-500	1
8	SFF01207	ADAPTER BRACKET C101 - TRIOVING LOCKER	1
9	SFF350916P1	FUNDAMENT, KTV-500	1
10	-	Blind rivet nut M10	2
11	-	Bolt M10 DIN913	2
12	-	Lock 101,	1
13	-	Blind rivet 4,8X10 DIN7337 AL	13
14	-	SCREW M5x10 DIN7985 TORX	8
15	SFF250471P5	SARG, KTV-500 FOR 2400015	1
16	sff00555	Handle fol KTV fiberskap	2
17	100359	WATERPROOF CHIPBOARD KTV-500	1
18	SFF2007064	Cabel holder KTV500	2



DETAIL B
SCALE 1 : 1



Surface -	Material -	Sheet thickness -	Weight 36003.45
Project 1041	Tolerance NS-ISO 2768-1, M	Units mm, g	Scale
Department UPP	Designer GRA	2. Designer VPA	Format A3
Logo 	Description KTV 500 RAL6012 F/TRIOVING	Document status RELEASED	Drawing no SFF2400015
		Rev.no	Date 2012.06.28
			Sheet/Sheets 1/1